



4 Charles Clowes Walk, London
SW11

GARTON JONES.COM



4 Charles Clowes Walk, London , SW11

GARTON JONES.COM

9 Albert
Embankment
London
SE1 7SP

Sales +44 (0) 20 7735 1888
nineelms@gartonjones.com
www.gartonjones.com

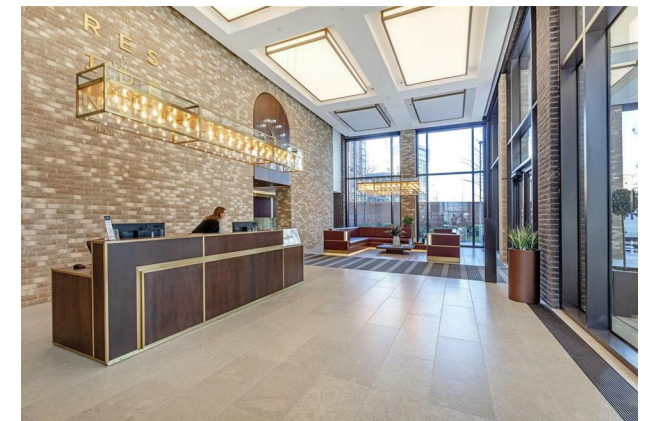
£980 Per Week

A spacious 2-bedroom, 2-bathroom apartment of approx. 886sq.ft (82.31sq.m) located in Thornes House, part of The Residence Collection in Nine Elms. This elegant apartment is on the 5th floor of this popular development which for the residents' private use features a 24-hour concierge, gym, media room, board room and dedicated building manager. Ideally located within close walking distance to both Nine Elms Tube Station and the extensive transport links at Vauxhall Station, amenities such as the Black Cab Coffee Co as well as a Waitrose convenience store are located nearby and you are also close to a host of other local shops and restaurants.

Please note furniture may differ to that shown in the current photos.

- Electricity Supply — Mains | Water Supply — Mains | Sewerage — Mains | Heating — Underfloor Heating
- Broadband & Mobile Signal : Check Coverage via Ofcom
- Parking: Available via Separate Agreement
- Lift Access
- Building Safety: EWS1 available on request
- Council Tax Band F (London Borough of Wandsworth)
- 12 Month Minimum Term
- 6 Week Security Deposit
- Holding deposit equivalent to 1 week of rent
- Rent to be payable monthly in advance
- EPC Rating B (85)

- 2 Bedrooms
- 886sq.ft (82.3sq.m)
- 2 Bathrooms (1 En-Suite)
- Open Plan Reception
- Modern Integrated Kitchen
- Balcony
- Underfloor Heating
- 24 Hour Concierge
- Residents Gym
- 0.2 Miles to Nine Elms Tube Station



EPC certificate available on request.



FIFTH FLOOR

